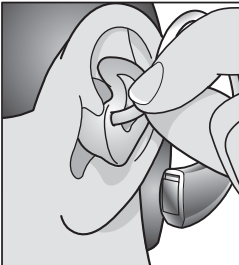


Receiver in the Canal (RIC)

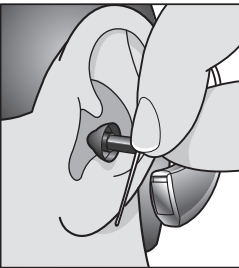
This hearing aid has 2 components, the hearing aid, which is situated behind the ear, and the receiver or speaker. The receiver/speaker is situated in the ear canal and connected to the hearing aid which sits on top of or behind the ear via a thin tube.

Traditional



Behind the Ear (BTE)

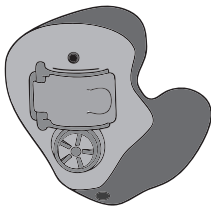
All BTE instruments' components are housed in a casing that fits on top of or behind the ear. BTEs are considered either traditional fit or slim-tube fit. An ear hook and hollow tubing connect the hearing aid to an ear mold that fills the ear canal and outer ear.



Tradition Fit: Components are housed in the casing behind the ear and uses hollow tubing to connect to the ear mold. The ear mold fills the ear canal and outer ear.

Slim-Tube Fitting: Slim-tube fittings use thin hollow tubing and ear bud in place of the ear mold to connect the BTE to the hearing aid.

Slim-Tube



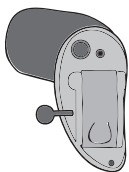
In the Ear (ITE)

Custom made instrument where the components are placed directly into the shell of the hearing aid. The shell fills the entire bowl area of the outer ear.



In the Canal (ITC)

Custom made instrument where the components are placed directly into the shell of the hearing aid. The shell fills a smaller portion of the bowl area of the outer ear.



Completely in the Canal (CIC)

Custom made instrument where the components are placed directly into the shell of the hearing aid. The shell fits fully into the ear canal and has minimal visibility.